

REFLECTED CEILING PLAN NOTES

- 1. CONTRACTOR TO FIELD VERIFY ALL DIMENSIONS.
- 2. ALL ITEMS REFERENCED ARE EXISTING UON.
- 3. REFER TO GENERAL NOTES ON G1.0 - G1.3 FOR FURTHER INFORMATION & REQUIREMENTS.

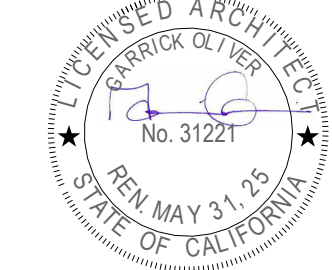
REFLECTED CEILING PLAN LEGEND

- AREA OF WORK
- (E) TO REMAIN
- (E) TO BE REMOVED
- (E) WALL TO REMAIN
- (N) WALL - SEE WALL SCHEDULE ON A8.1
- (N) INSULATED WALL PANELS PER MFG - SEE WALL SCHEDULE ON A8.1
- CEILING PER MFG
- NOT IN SCOPE

KEYNOTES

- 2.03 (E) AIR CURTAIN TO BE SALVAGED AND REINSTALLED - PER MECHANICAL
- 2.04 (E) SURFACE MOUNTED EXTERIOR LIGHT FIXTURE TO BE SALVAGED AND REINSTALLED PER ELECTRICAL
- 2.13 (E) FIRE ALARM WITH RELATED CONDUIT TO BE REMOVED, SALVAGED AND REINSTALLED - PER ELECTRICAL
- 2.14 (E) CEILING MOUNT LIGHT FIXTURE WITH RELATED CONDUIT TO BE REMOVED - PER ELECTRICAL
- 2.58 (D) WALL MOUNTED LIGHT FIXTURE TO BE REMOVED PER ELECTRICAL
- 5.03 HORIZONTAL HOLDDOWN - PER STRUCTURAL DETAIL 17/S5.1
- 5.04 DRAG STRUT - PER STRUCTURAL
- 26.01 CEILING MOUNT LIGHT FIXTURE - PER MFG

FOR DSA REVIEW ONLY - NOT FOR CONSTRUCTION



BOARD OF EDUCATION

PREPARED FOR THE

obrARCHITECTURE

PREPARED BY THE

2419 EL CAJON BLVD., SAN DIEGO, CA 92104

DEMOLITION AND PROPOSED REFLECTED

CEILING PLAN

SAN DIEGO UNIFIED SCHOOL DISTRICT

KITCHEN MODIFICATIONS GROUP 6

BELL MIDDLE SCHOOL

620 BRIARWOOD RD,

SAN DIEGO, CA 92139

DSA SUBMITTAL SET

PROJECT NO. SDUF-006A

R.S. A.P.

FILE NAME

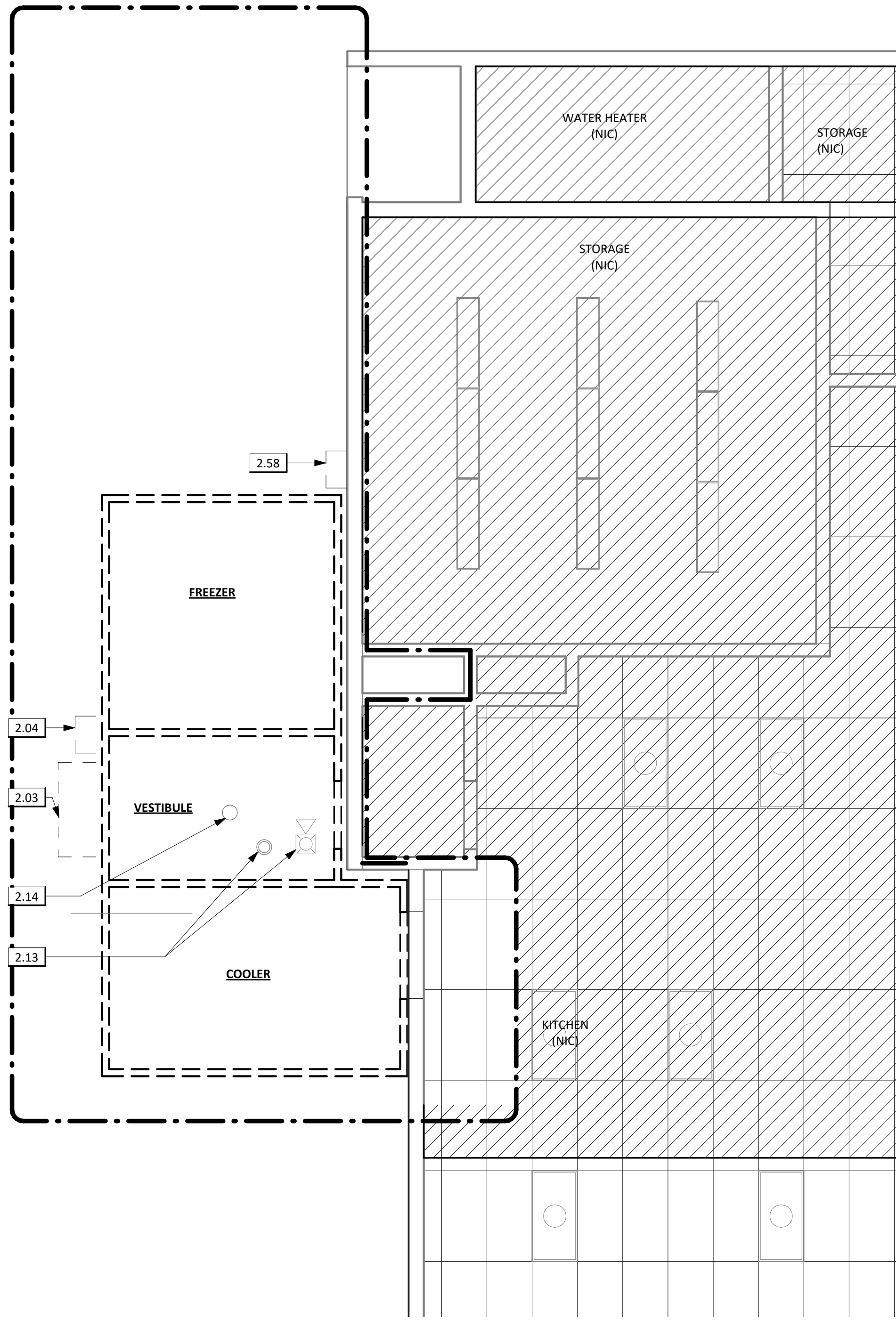
DATE 04/09/2025

REVISIONS

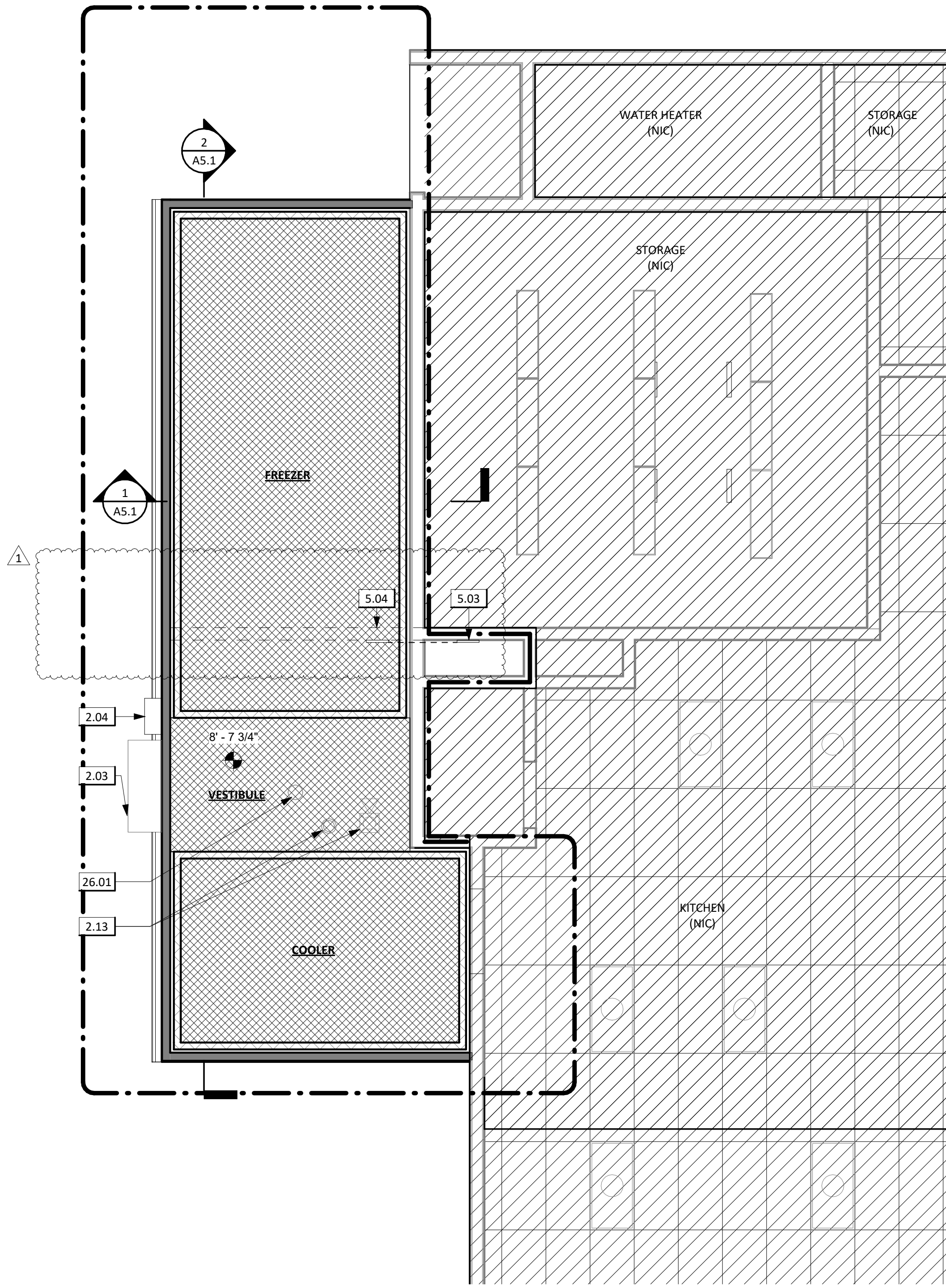
1 04/23/25

SHEET NO.

A2.1



2 DEMOLITION REFLECTED CEILING PLAN  
1/4" = 1'-0"



1 PROPOSED REFLECTED CEILING PLAN  
1/4" = 1'-0"